

External Alarm

RL-LAHLESS



ATTABOX

10x8x4 Opaque Enclosure

NEMA RATED:

IP68

Type 6P, 4X, 4, 3R, 12

F1 UV-light

5VA Flammability

UL 1741 Compliant

TOMAR MICROSTROBES

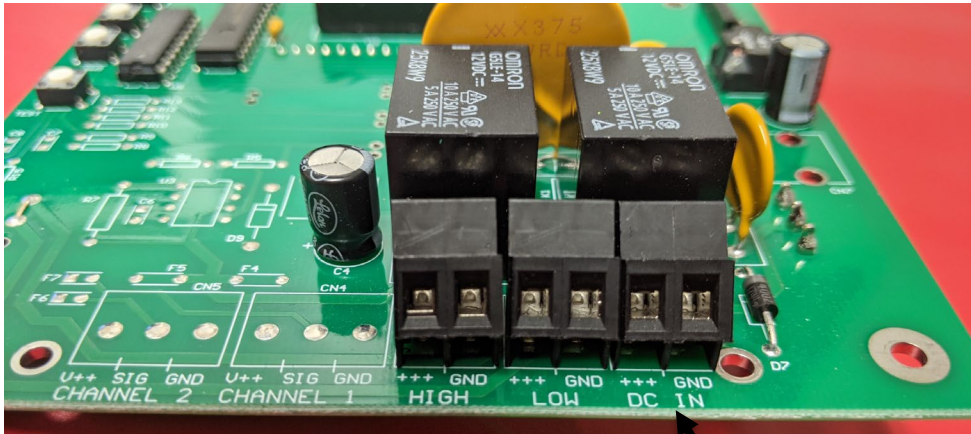
- built-in RFI filters
- lens has hermetic o-ring seal
- solid state power supply
- 10,000 hour strobe lamp
- available in six lens colors
- UL listed
- NEMA 4X

POWER ALARM® PROGRAMMABLE MULTI-SOUND INDUSTRIAL SIGNALS

The POWER ALARM® siren is a heavy duty industrial audible alarm designed to operate under adverse industrial conditions such as shock, vibration, or transient voltage surges. The models 1000 and 1100 POWER ALARMS are supplied with a plug-in single channel programmable sound module that generates 8 different rotary switch selectable sounds plus 4 additional sounds that can be selected remotely by customer switch. Remote feature requires RJ45-6 remote control cable. See chart below for details.

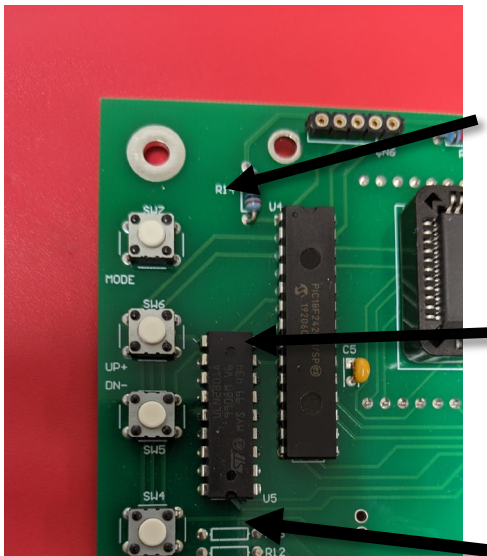
- 120 db at 4 ft.
- NEMA 4 circuitry enclosure.
- 100% all metal speaker, weatherproof construction.
- Speaker and plug-in programmable sound module included.
- -55 to + 60 degree C temperature range.
 - 8" tall X 6" wide X 3" D enclosure
 - 10 1/2" L X 19 1/2" tall X 10" W speaker, 15 lbs. Total.

REDLINE



12vdc IN

High and Low relays will trigger when they pass the set point thresholds on your RL- Monitor. *These set points are controlled on the Redline 2, 4, 8, 16, 24 channel monitors. * Refer to your monitors manual on how to set its set point addresses



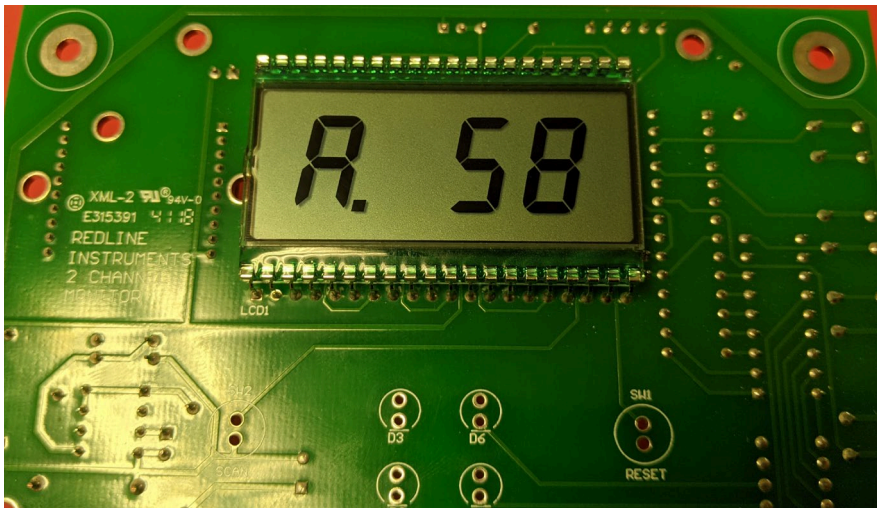
Mode button- press mode button to change menu settings

Up and Down buttons- use to change digits in the menus

Test button- scrolls through the sources

you shouldn't need this button

Addressing- To get to this mode press the **MODE** button twice.



---The default address is always set to 58. Change this by using the **Up and Down** buttons. This address has to match the RL- Monitor or it will not communicate. Refer to your monitors manual on how to set its destination address. Address 60 does not allow any communication, therefore, do not use this channel number.

****Double check your monitor's address if relays do not trigger. ****

Source addresses- to get to this set of address press the **MODE** button 3 times

Consult your Redline Technician before changing these set of addresses

---Source addresses offer another layer to addressing. Default they are all set to 46. This address has to match the RL- Monitor or it will not communicate. Refer to your monitors manual on how to set its source address.